

PRODUCT INFORMATION PACKET



Model No: SD4B250T64Y
Catalog No: LM16235
447T ODP 250HP1800 460000000/360
Open Drip Proof (ODP)



Regal and Leeson are trademarks of Regal Beloit Corporation or one of its affiliated companies.
©2018 Regal Beloit Corporation, All Rights Reserved. MC017097E



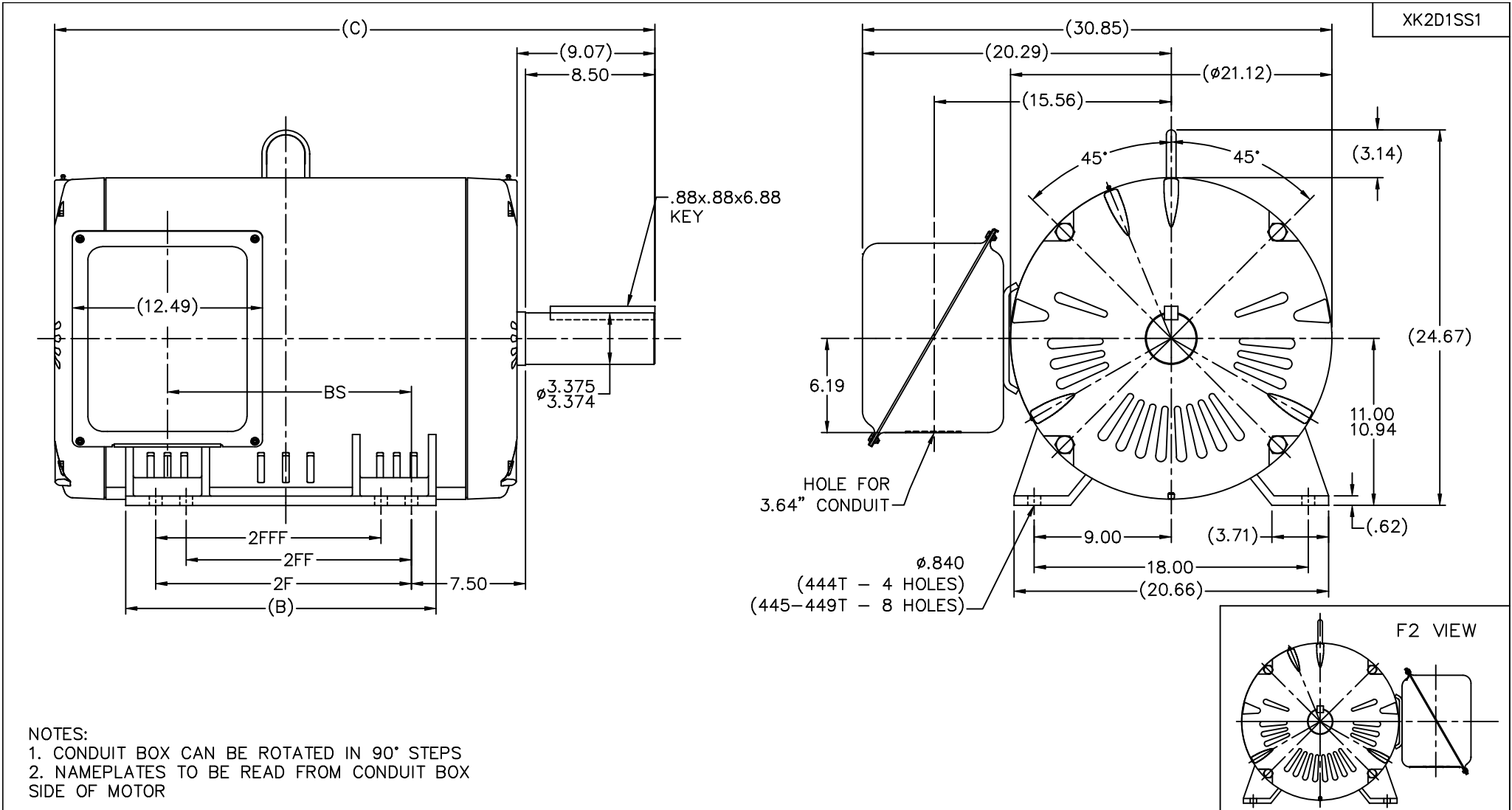


Nameplate Specifications

Output HP	250 Hp	Output KW	187.0 kW
Frequency	60 Hz	Voltage	460 V
Current	284.0 A	Speed	1785 rpm
Service Factor	1.15	Phase	3
Efficiency	95.8 %	Duty	Continuous
Insulation Class	F	Design Code	B
KVA Code	G	Frame	447T
Enclosure	Drip Proof	Overload Protector	No
Ambient Temperature	40 °C	Drive End Bearing Size	6318
Opp Drive End Bearing Size	6315	UL	Recognized
CSA	Y	CE	Y
IP Code	22		

Technical Specifications

Electrical Type	Squirrel Cage Induction Run	Starting Method	Wye Start Delta Run
Poles	4	Rotation	Reversible
Mounting	Rigid base	Motor Orientation	HORIZONTAL
Drive End Bearing	BALL	Opp Drive End Bearing	BALL
Frame Material	Rolled Steel	Shaft Type	T
Overall Length	42.93 in	Frame Length	26.77 in
Shaft Diameter	3.375 in	Shaft Extension	8.5 in
Assembly/Box Mounting	F1 ONLY		
Outline Drawing	XK2D1SS1-2677	Connection Diagram	A-EE7340-LN

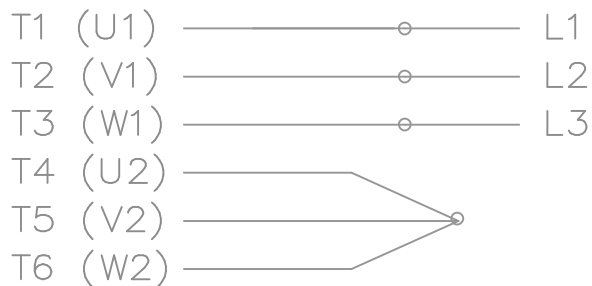


NOTES:
 1. CONDUIT BOX CAN BE ROTATED IN 90° STEPS
 2. NAMEPLATES TO BE READ FROM CONDUIT BOX SIDE OF MOTOR

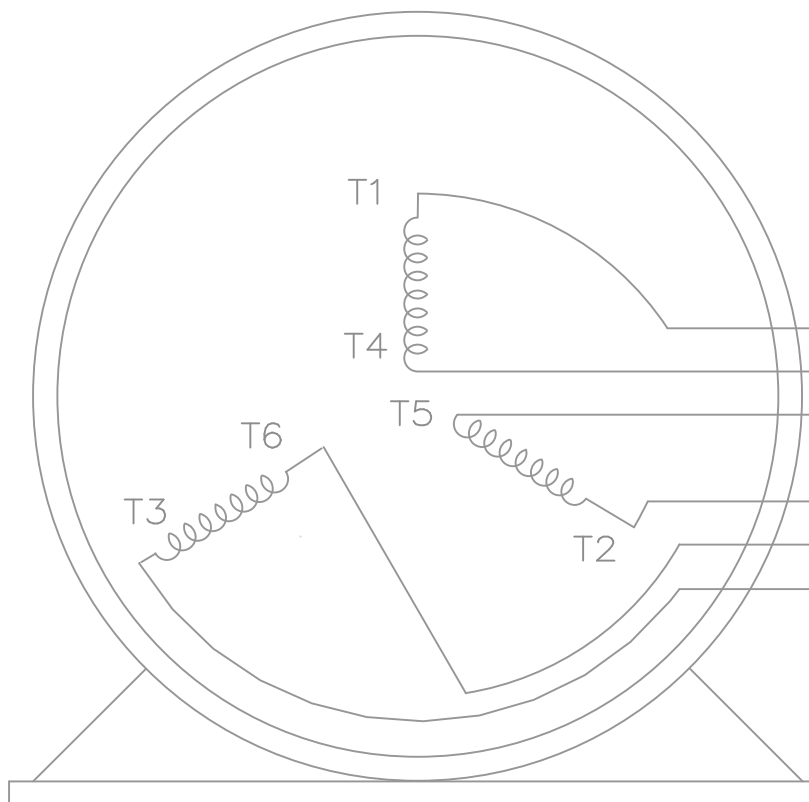
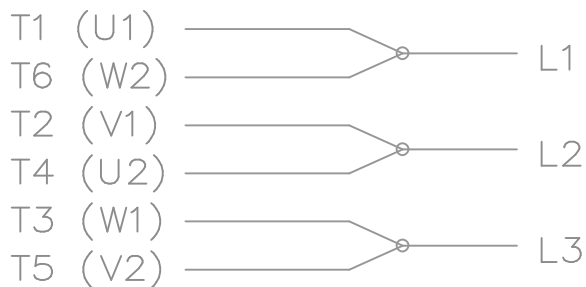
DASH	FRAME	C	B	2F	2FF	2FFF	BS	TOLERANCES UNLESS SPECIFIED			Lincoln MOTOR		DRAWN TJB 08-09-2001		
								DEC.	INCHES			CHK	ML	08-09-2001	
4	REVISED SHAFT EXT. TO CORRECT LENGTH							CTO	06-13-2003	TB	.X	±.1			
3	REVISED PER MU42707							TJB	07-23-2002	HNH	.XX	±.02	TITLE OUTLINE NEMA MOTORS	SCALE 1=6	
2	ADDED DASHES 2677 & 3177 CN 34258							TJB	08-21-2001		.XXX	±.005	440T OPD UE	APPD HNH 08-09-2001	
1	NEW DRAWING - REPLACES 3XSD134FSSK-2 CN 34258							TJB	08-10-2001		.XXXX	±.0005	MATL	REF	
NO.	REVISION	BY & DATE			CHK	ANG	FINISH			PREV					
THIS DRAWING IN DESIGN AND DETAIL IS OUR PROPERTY AND MUST NOT BE USED EXCEPT IN CONNECTION WITH OUR WORK ALL RIGHTS OF DESIGN AND INVENTION ARE RESERVED THIS IS AN ELECTRONICALLY GENERATED DOCUMENT - DO NOT SCALE THIS PRINT								RFP		CAD FILE xk2d1ss1	SIZE	DRAWING NO.	PAGE	OF	REV.
								DIST	BY		B	XK2D1SS1	4	4	

THREE PHASE – Y START
Δ RUN MOTOR

START



RUN




T1 (U1)
T4 (U2)
T5 (V2)
T2 (V1)
T6 (W2)
T3 (W1)

VIEW OF TERMINAL END

T6CK
T6BM
T4CC
T2DL
T4C

NOTE:
IEC LEAD MARKINGS ARE NOTED
IN PARENTHESES

				TOLERANCES UNLESS SPECIFIED			DRAWN BLR 10-04-1999		
				DEC.	INCHES		CHK DRS 10-04-1999		
				.X	±.1		APPD TB 10-04-1999		
3	REVISED TO MATCH M.E. ORIGINAL	TAT 07-25-2005	ML	.XX	±.02	TITLE CONNECTION DIAGRAM 3Ø – WYE START DELTA RUN	SCALE 1=1		
2	REVISED DRAWING MISTAKE CN 29200-2980	ERH 05-15-2003	ML	.XXX	±.005		REF		
1	NEW DRAWING	BLR 10-09-1999		.XXXX	±.0005		FMF		
NO.	REVISION	BY & DATE	CHK	ANG	±'30"	FINISH	PREV		
THIS DRAWING IN DESIGN AND DETAIL IS OUR PROPERTY AND MUST NOT BE USED EXCEPT IN CONNECTION WITH OUR WORK ALL RIGHTS OF DESIGN AND INVENTION ARE RESERVED THIS IS AN ELECTRONICALLY GENERATED DOCUMENT – DO NOT SCALE THIS PRINT				RFP	CAD FILE ee7340_In		SIZE	DRAWING NO. PAGE OF	REV.
				DIST	WA-LB-SB		A	EE7340-LN	3

Data Sheet

Date: 1/18/2018

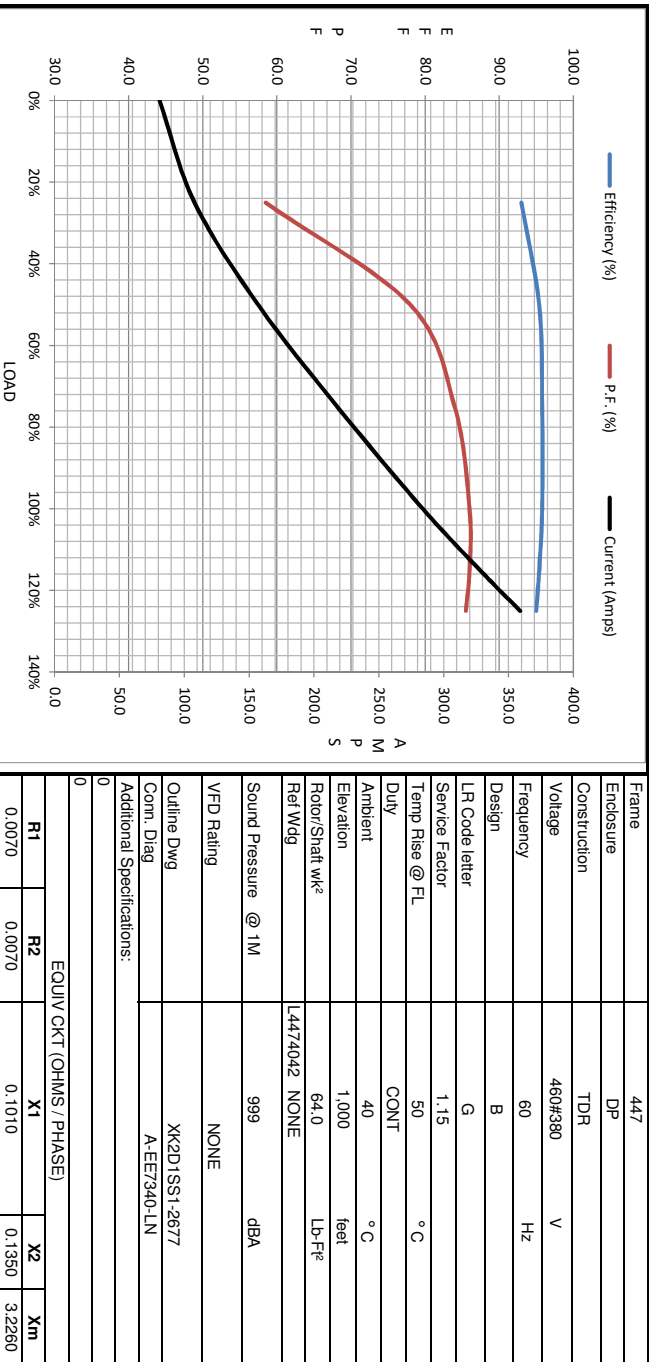
LM16235



Data @ 460 V

Motor Load Data								
Load	0%	25%	50%	75%	100%	115%	125%	LR
Current (Amps)	81.0	108	157	218	284	328	359	1,725
Torque (ft-lb)	0.00	183	366	550	735	847	922	1,525
RPM	1800	1797	1793	1790	1785	1,783	1780	0
Efficiency (%)		93.0	95.4	95.8	95.8	95.4	95.0	
P.F. (%)		58.5	78.0	84.0	86.0	86.0	85.5	36.0

Motor Speed Data						Information Block																					
Speed (RPM)	LR	Pull-Up	BD	Rated	Idle	HP	Sync. RPM	Frame	Enclosure	Construction	Voltage	Frequency	Design	LR Code letter	Service Factor	Temp Rise @ FL	Duty	Ambient	Elevation	Rotor/Shaft wk ²	Ref Wdg	Sound Pressure @ 1M	VFD Rating	Outline Dwg	Conn. Diag	Additional Specifications:	
						250.0	1800	447	DP	TDR	460#380	60	B	G	1.15	50	CONT	40	1,000	64.0	NONE	999	NONE	XK2D/SS1-2677	A-EE7340-1N		
Current (Amps)	1,725	1,550	1,125	284	81.0																						
Torque (ft-lb)	1,525	1,350	735	735	0.00																						



EQUIV CKT (OHMS / PHASE)			
R1	R2	X1	Xm
0.0070	0.0070	0.1010	3.2260

